



GAMBRILL VIEW

The Sierra

The Sierra is a spacious home with an open kitchen and family room, separate dining and flex room, as well as four bedrooms and laundry on the second floor.



ARTS & CRAFTS



CRAFTSMAN



FARMHOUSE

Visit [GambrillView.com](https://www.gambrillview.com) for pricing and community information.

Call (240) 415-8613 to schedule a model tour.



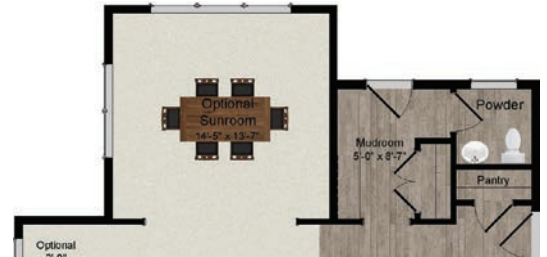
GAMBRILL VIEW

The Sierra

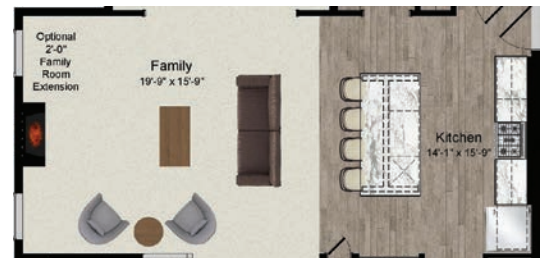


FIRST FLOOR

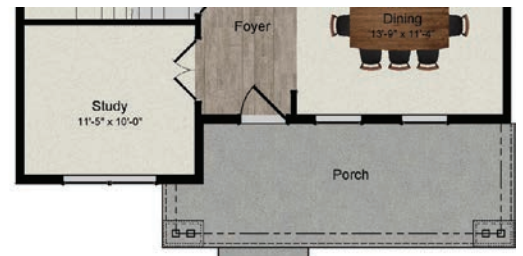
FIRST FLOOR OPTIONS



Sunroom



Family Room Extension



Arts & Crafts Elevation

2,332 to 3,150
square feet

4-5 Bedrooms

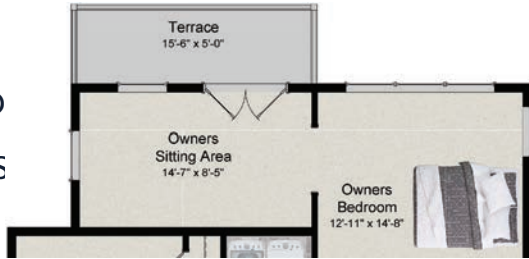
- » Rear-entry mudroom, customizable space for a formal living or dining room, and stairway that opens to the family room
- » Study, walk-in laundry room, and owner's bath with spacious shower and water closet

Visit GambrellView.com for pricing and community information.

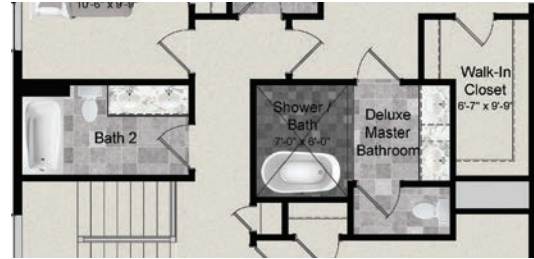
Call (240) 415-8613 to schedule a model tour.

The Sierra is a spacious home with an open kitchen and family room, separate dining and flex room, as well as four bedrooms and laundry on the second floor.

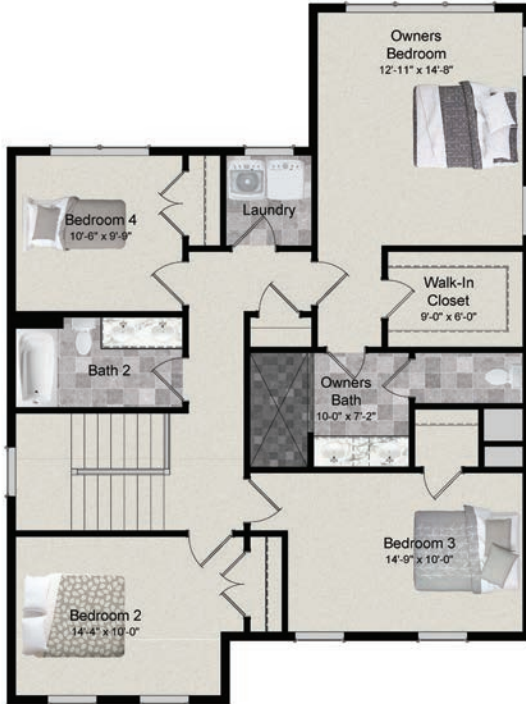
SECOND FLOOR OPTIONS



Owners Sitting Room & Terrace



Deluxe Master Bathroom



SECOND FLOOR



LOWER LEVEL

Group:
Broker Name:
Phone:

Premier Group
Long & Foster Real Estate Inc
Office (301) 945-9010

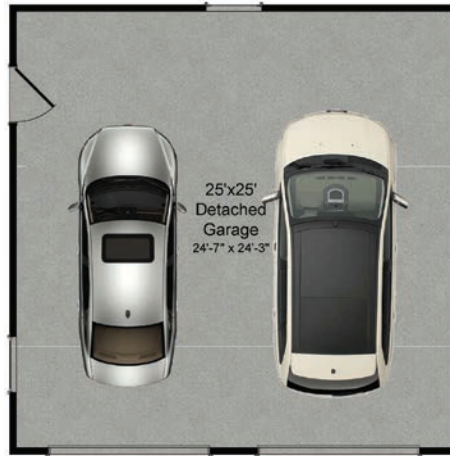
GambrillView.com



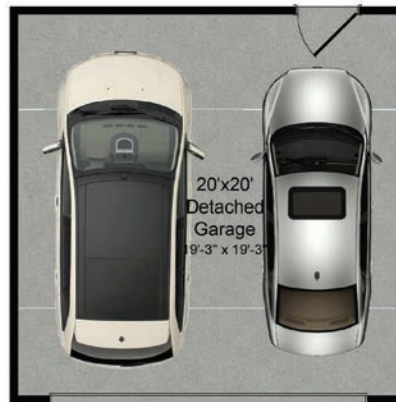
MHBR #8184



**GARAGE
OPTIONS**



25 x 25 Garage



20 x 20 Garage