



GAMBRILL VIEW

# The Ridge

The Ridge offers a wide open floor plan with spacious rooms and lots of natural light as well as flexible spaces, allowing you to live the way you want.



CRAFTSMAN



FARMHOUSE



ARTS & CRAFTS

Visit [GambrillView.com](https://www.GambrillView.com) for pricing and community information.

Call (240) 415-8613 to schedule a model tour.

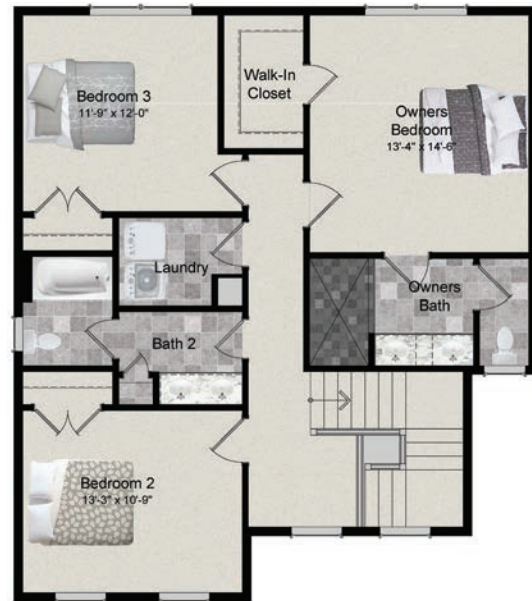


GAMBRILL VIEW

# The Ridge



FIRST FLOOR



SECOND FLOOR

**2,027 to 3,376**  
square feet

**3-5 Bedrooms**

- » Owner's bath with spacious shower and ceramic tiling, separate water closet, and dual sinks
- » Open-corner foyer with natural light, 595-square-foot family room, and gourmet kitchen with oversized island

Visit [GambrellView.com](http://GambrellView.com) for pricing and community information.

Call (240) 415-8613 to schedule a model tour.

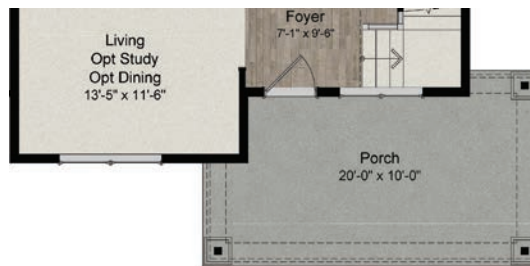


The Ridge offers a wide open floor plan with spacious rooms and lots of natural light as well as flexible spaces, allowing you to live the way you want.

FIRST FLOOR OPTIONS



Morning Room & Family Room Extensions



Arts & Crafts Elevation

SECOND FLOOR OPTIONS



Master Bedroom Extension



LOWER LEVEL

Group:  
Broker Name:  
Phone:

Premier Group  
Long & Foster Real Estate Inc  
Office (301) 945-9010

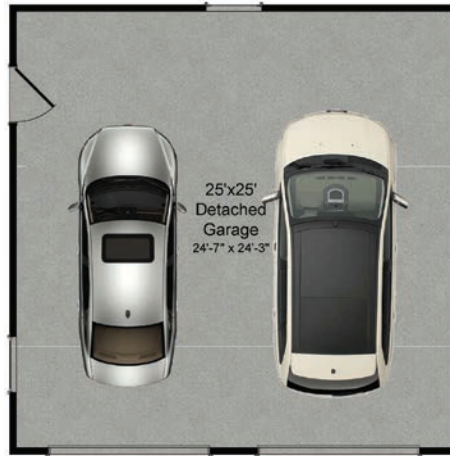
GambrillView.com



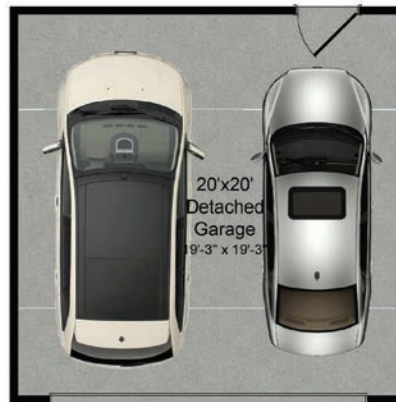
MHBR #8184



**GARAGE  
OPTIONS**



25 x 25 Garage



20 x 20 Garage