



GAMBRILL VIEW

The Knoll

The Knoll is an affordable two-story townhome inspired by the spaciousness of a single-family home including an open floor plan and luxury master suite.



1,613 to 1,672
square feet

2-3 Bedrooms

- » Owner's bath with dual sinks, spacious ceramic-tiled shower, and separate water closet
- » Rear-load alley parking with backyard, open stairway full of natural light, and gourmet kitchen with 12-foot island and walk-in pantry

Group:
Broker Name:
Phone:

Premier Group
Long & Foster Real Estate Inc
Office (301) 945-9010

GambrillView.com



MHBR #8184

**ROCKY
GORGE
HOMES**



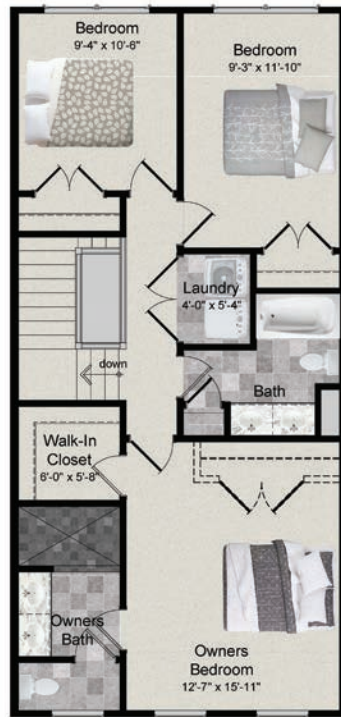
GAMBRILL VIEW

The Knoll

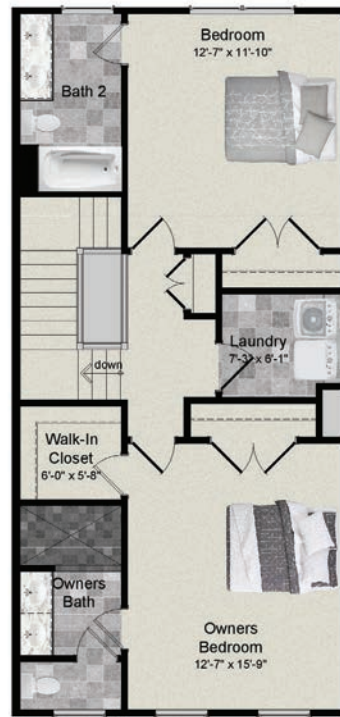
The Knoll is an affordable two-story townhome inspired by the spaciousness of a single-family home including an open floor plan and luxury master suite.



FIRST FLOOR



SECOND FLOOR



SECOND FLOOR (Optional)



20 x 20 GARAGE (Optional)

Visit GambriellView.com for pricing and community information.

Call (240) 415-8613 to schedule a model tour.

Group:
Broker Name:
Phone:

Premier Group
Long & Foster Real Estate Inc
Office (301) 945-9010

GambriellView.com



MHBR #8184

